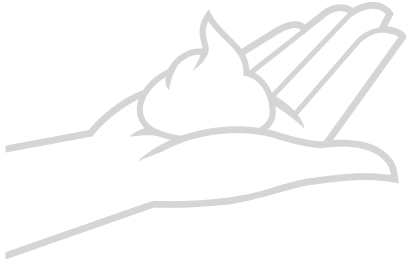
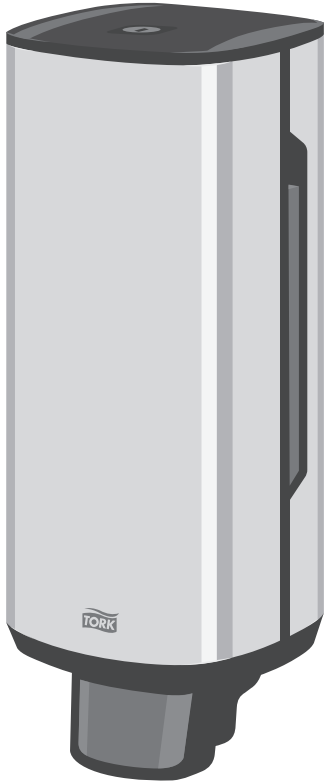
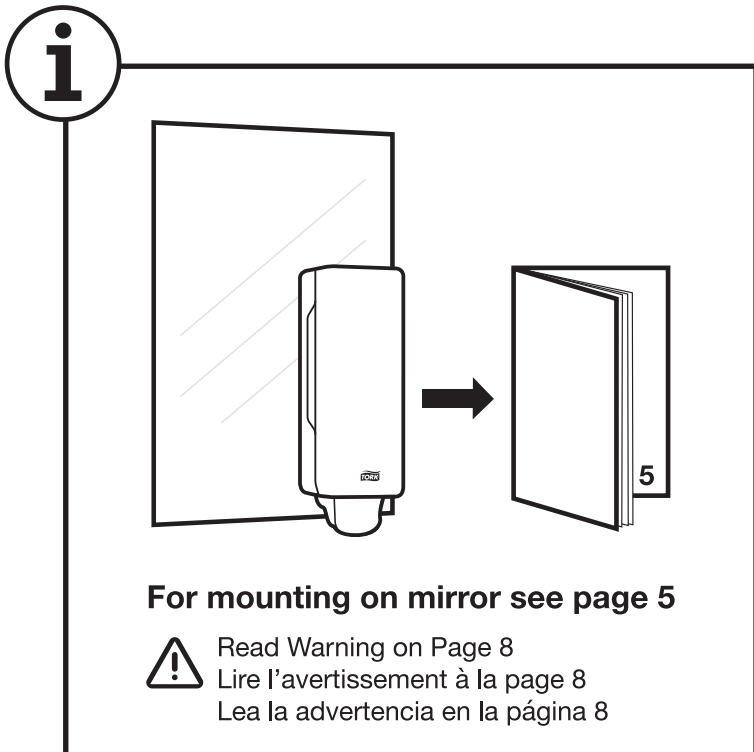
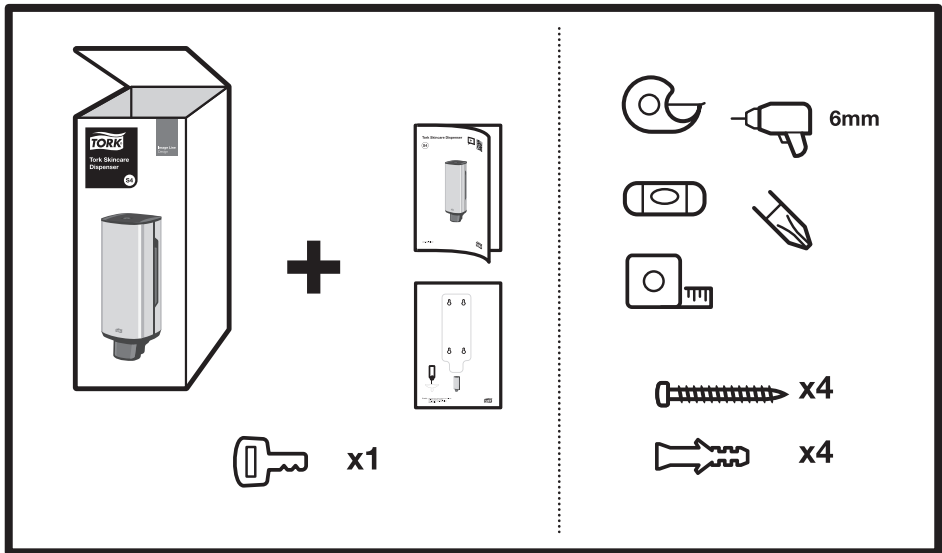


# Tork Skincare Dispenser

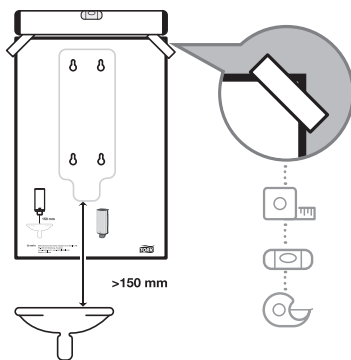
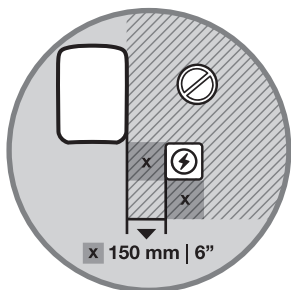
S4

Image  
Design



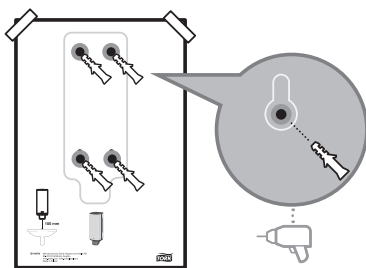


1

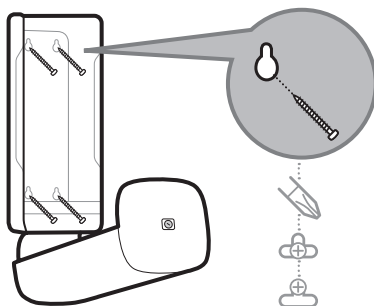


Read Warning on Page 8  
Lire l'avertissement à la page 8  
Lea la advertencia en la página 8

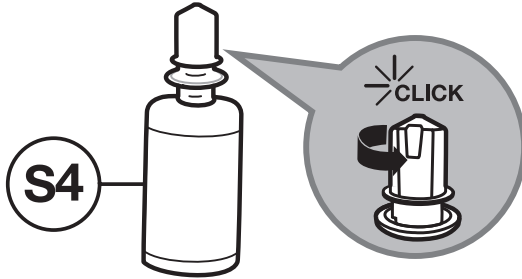
2



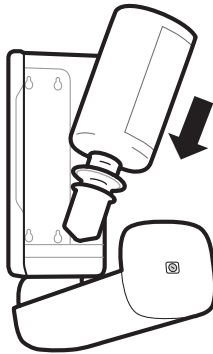
3



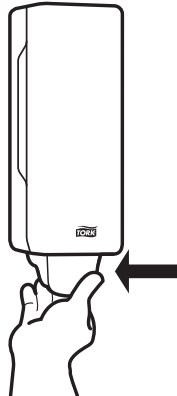
4



5



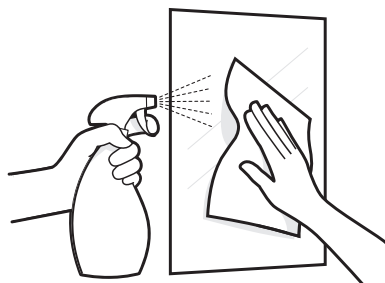
6





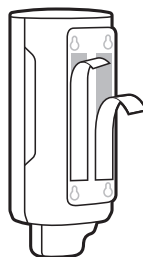
## Mounting on mirror

1



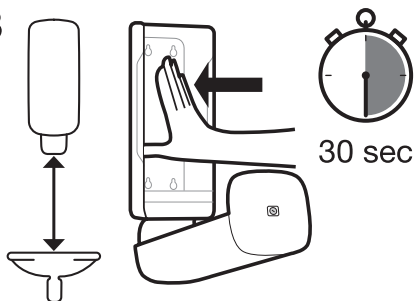
Ensure the mounting surface is flat, clean and dry.

2



Peel the protective liners from the tape exposing the adhesive.

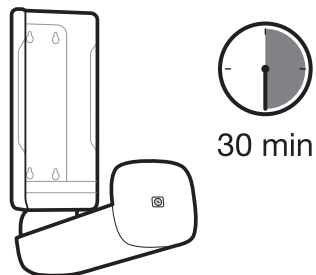
3



>150 mm

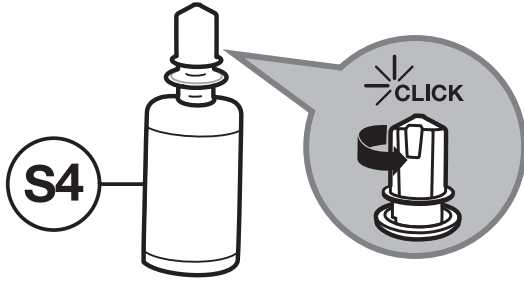
Mount the dispenser to the flat surface, press firmly and hold in place for at least 30 seconds.

4

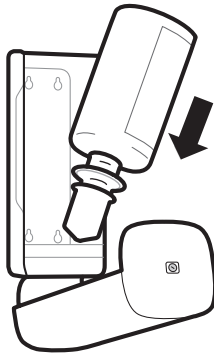


Do not place the refill or batteries in the dispenser for at least 30 minutes.

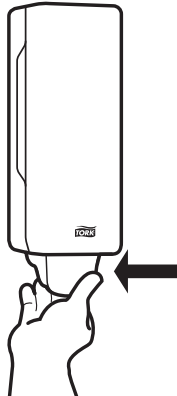
4



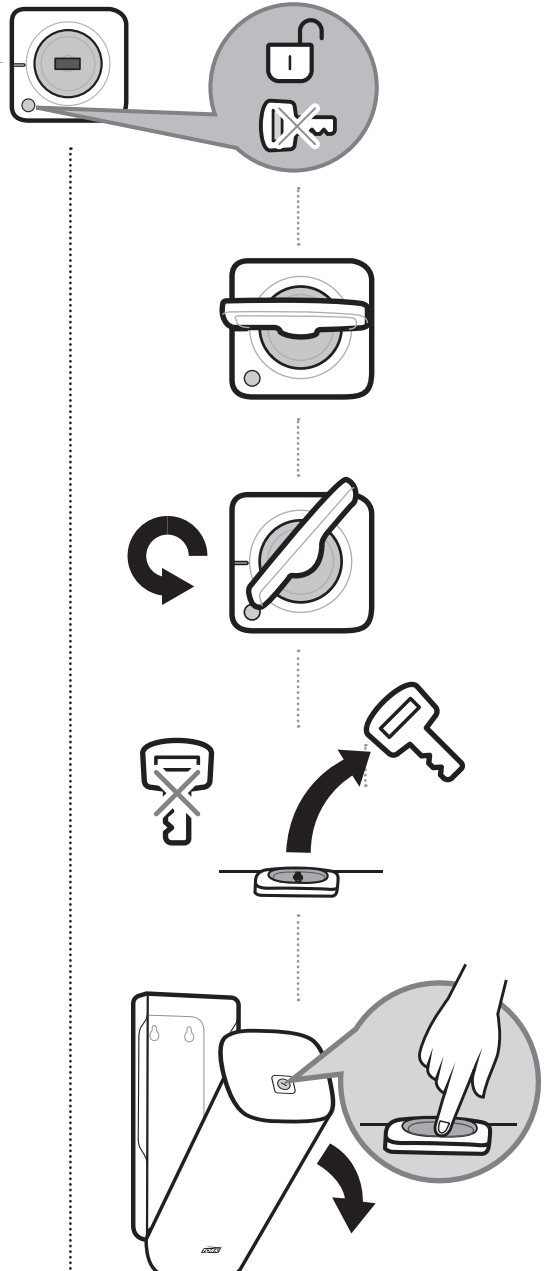
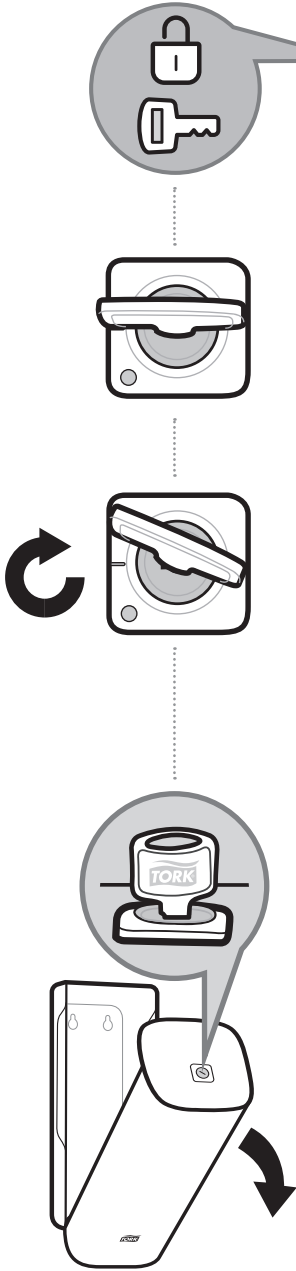
5



6



6



## **EN** Warning

- To avoid a potential shock hazard to dispenser users, do not install dispenser directly above an electrical outlet or within six inches from any edge of an electrical outlet.
- Do not place dispenser in a position where users must reach over an electrical outlet to access the dispenser.
- It is the installers responsibility to ensure installation of unit complies with all applicable codes, standards, and regulatory requirements including building codes and electrical codes.

## **Disposal**

- Damaged or malfunctioning product should be disposed of immediately to avoid potential of injury
- Products should be disposed of in accordance with applicable regulations

## **FR** Avertissement

- Pour éviter tout risque de choc électrique aux utilisateurs, n'installez pas le distributeur directement au-dessus d'une prise électrique ou à moins de 15,24 cm (6 pouces) du pourtour d'une prise électrique.
- Ne pas placer le distributeur à un endroit où les utilisateurs doivent passer les mains au-dessus d'une prise électrique pour y avoir accès.
- Il incombe aux installateurs de s'assurer que l'installation de l'unité est conforme à tous les codes, normes et exigences réglementaires applicables, y compris les codes du bâtiment et les codes de l'électricité

## **Élimination:**

- Les produits endommagés ou défectueux doivent être immédiatement jetés afin d'éviter tout risque de blessure
- Les produits jetés doivent être éliminés conformément aux réglementations en vigueur

## **ES** Advertencia

- Para evitar un posible riesgo de descarga eléctrica para los usuarios del dispensador, no lo instale directamente sobre un enchufe o a menos de 6 pulgadas (15 cm) de cualquier borde de un enchufe.
- No coloque el dispensador en una posición en la que los usuarios deban alcanzar un enchufe para acceder al dispensador.
- Es responsabilidad del instalador garantizar que la instalación de la unidad cumpla con todos los códigos, las normas y los requisitos normativos aplicables, incluidos los códigos de construcción y los códigos eléctricos.

## **Eliminación:**

- Los productos dañados o con mal funcionamiento deben desecharse inmediatamente para evitar posibles lesiones
- Los productos deben desecharse de acuerdo con las reglamentaciones aplicables



## **Cleaning instructions**

Clean dispenser with mild detergent and soft cloth

## **Instructions de nettoyage**

Nettoyez le distributeur avec un détergent doux et un chiffon propre

## **Instrucciones de limpieza**

Limpie el dispensador con un detergente moderado y un paño suaves

European Community Design Registration RCD 002601922



**essity**

Manufactured by Essity Hygiene and Health AB

SE-40503 Göteborg, Sweden

[www.essity.com](http://www.essity.com), [www.torkglobal.com](http://www.torkglobal.com)

Made in Poland